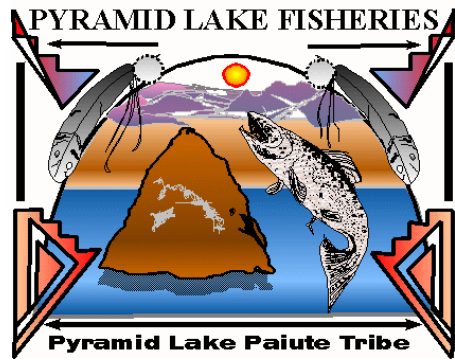


Pyramid Lake Fisheries

603 Sutcliffe Drive
Reno, Nevada 89510

Phone: 775-476-0500
Fax: 775-476-0558
E-mail: smandell@plpt.nsn.us
msevon@plpt.nsn.us



Pyramid Lake Fisheries was established in 1974. Dedicated to the recovery of the native Cui-ui and the Lahontan Cutthroat trout in Pyramid Lake and the lower Truckee River.

Our website is near completion so look for our new pages at: pyramidlakefisheries.org

By following a simple procedure each time we leave the water, we can stop aquatic hitchhikers. Knowing which waters contain nuisance hitchhikers is not as important as doing the procedure **every time** we leave any lake, stream or coastal area.

Simple Procedure:

- Remove any visible mud, plants, fish or animals before transporting equipment.
- Eliminate water from equipment before transporting.
- Clean and dry anything that came in contact with water (Boats, trailers, equipment, clothing, etc.)
- Always empty and dry out live-fish wells after taking fish out.
- Never release plants, fish, or animals into a body of water unless they came from that body of water.

Be informed and take action. We all need to

work together to protect our environment. Why is this important? Because these hitchhikers can:

- Reduce game fish populations.
- Ruin boat engines and jam steering equipment.
- Make lakes and rivers unusable by boaters and swimmers.
- Reduce native species and degrade ecosystems.
- Effect local economies of water-dependant communities.

Some common hitchhikers are Zebra Mussels, New Zealand Mudsnails, Hydrilla, Whirling Disease, Spiny Water Fleas, Round Gobies, and various aquatic plants.

Please take a moment and look at the ANS Task Force, U.S. Fish and Wildlife Service and the U.S. Coast Guard websites for more information.



Lets keep Pyramid Lake free of any of these hitchhikers. We have not found any of these threats in our waters but we are monitoring and hope that you will follow these simple steps of prevention.

Thank you and have a great fishing season.

Reminder:

Just a reminder to all anglers, please report all colored floy-tags. If you catch a fish with a floy-tag report the info at the creel station or call the number on the tag. We are looking for **fork length, sex, area caught and tag number and color.**

Another note: We are floy-tagging all of the fish that have been spawned this year and these floy-tags are blue.

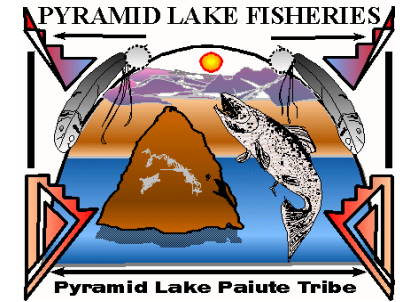
Inside this issue:

New Biologist	2
Creel survey update	3
Big fish	3
NAS reminder	4

Creel Chronicles

Volume 1 Issue 3

April 2011



Pyramid Lake Fisheries

Regulation changes opens Nets for fishing

During the April 1 meeting, the Pyramid Lake Tribal Council approved fishing regulation changes which will allow new opportunities for Pyramid Lake anglers. The most notable change is removing the closure of the nets area during the spawning run. An additional bonus for area anglers is the change in the Sacramento Perch limit which is now an unlimited bag. These changes took place immediately and the anglers were allowed to fish the nets on April 2. As of Monday, April 4, anglers were jubilant with fish up to 14 pounds being netted. The net areas are pretty crowded with fishermen and catch rates are very high.

The regulation changes for

2011 were focused on changes requested from local fisherman and business owners, implementing invasive species protection and making regulations more user friendly to visitors. Other proposed



Fishing the Nets

changes include implementing language to increase awareness and allow the Tribe to stop vessels from entering Pyramid Lake that may be infested with

New Director for PLF

Pyramid Lake Fisheries has a new Executive Director. Albert John has been chosen to fill the position. Albert is a member of the Pyramid Lake Tribe and has worked with PLF for 22 years in several different positions including Numana Hatchery Supervisor and the Production Manager where he was the

aquatic invasive species. At this time the Tribe is not implementing a mandatory inspection program and fee system, the proposed changes would allow ranger staff to educate users about invasive species and perform voluntary inspections.

Anglers should note that the regulation changes did provide and increase in the closures of some areas for boats and fishing. At Anaho Island, boaters and fishermen are prohibited within 1,000 feet of the shoreline to reduce disturbance to pelicans. At the mouth of the river, the Needles and the Marble Bluff fishway, the protected area was also increased to 1,000 feet.

coordinator of operations of all the hatcheries in fish production. He is also a past tribal councilman and past member of the Regional Water Planning Commission from 2002-2008. We wish Albert the best in his new job.



PLF welcomes Fisheries Biologist

On January 30, 2010, PLF hired Mike Sevon as their Fisheries Biologist. Mike has a long history of working with the Lahontan Cutthroat trout throughout Nevada. While attending UNR, he worked part time at a creel check station on Pyramid Lake. When interviewed about his early days with Pyramid Lake, Mike said, "We ran the check station at the junction and I can recall the big Cutthroat and Bowcutts coming through and all the old time fisherman. It was here that I first developed a passion for Pyramid Lake that keeps drawing me back."

During his 36 year tenure with the Nevada Department of Wildlife he conducted stream surveys in northeast Nevada; worked on Walker Lake during the 1980's and early 90's, then became a supervising biologist for Northwest Nevada where he worked on Lahontan cutthroat trout Recovery in the Truckee, Walker and Carson River basins and in Humboldt County. During the last 5 years with NDOW, he shepherded the first

stocking of Lahontan Cutthroat trout in the upper Truckee River and developed interagency cooperation in research on bringing LCT back to the Truckee River. Mike said, "This was an exciting time, when the state, the US Fish and Wildlife and the Pyramid Lake Paiute tribe worked together to do good things for cutthroat trout."

At that time, NDOW was using the Lake Operations hatchery to acclimate cutthroat trout for Walker Lake. The state was purchasing eggs from Pyramid Lake to rear at the Mason Valley Hatchery for Walker Lake. This project brought us together working for a common objective, Pyramid Lake fisheries personnel worked side by side with NDOW biologist spawning fish on the shore of Pyramid Lake. "

When Dan Mosley, was hired as the Executive Director for Pyramid Lake fisheries, one of his objectives was too re-initiate surveys on the lake. Towards that end, a fisheries biologist job was created and Mike will

be directing a fish sampling program that will assist PLF in analyzing the connection between a very competent fish cultural program and the dynamic conditions of the last terminal lake strong hold for Lahontan Cutthroat trout. Regarding fisheries research at Pyramid Lake, Sevon said, "Some of the best limnologist and fisheries biologist in the world have done research here. It is an honor to read the reports from the likes of Bill Sigler, Dave Galat, Dave Monda, Gary Scopettone and Sudeep Chandra. One recommendation common to their summary reports is that it is important to monitor the fishery through time to gain an understanding of how the fish species are reacting to changes in the lake ecology."

I am very excited to be a part of Pyramid Lake Fisheries. The staff has made me feel very much at home and I look forward to the challenge of understanding the fish of Pyramid Lake, how we can improve the quality of our big cutthroat trout and improve our connection to the anglers who love this place as much as I do. "

We are very happy to have Mike on board with PLF and look forward to learning and sharing information to improve our fisheries program. Mike is also an excellent photographer and has some of his work on our new website.



"Some of the best limnologists and fisheries biologists have done research here".



Photo courtesy Mike Sevon mikesevonphotos.com

Creel Update

The following numbers are from Creel Surveying for the first three months of 2011. Our Creel Station was open every weekend, with the exception of a few bad weather days. We are going to continue opening the Pyramid station through April, as long as we continue getting anglers stopping by. Below are the total number of anglers that stopped and reported their fishing efforts at the Creel station on the Pyramid Highway.

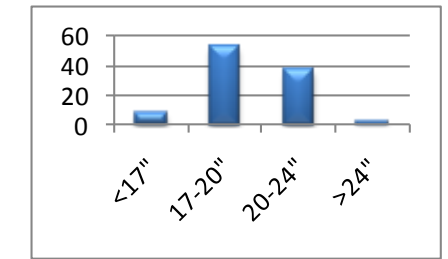
Total # angler Interviewed	
JAN	539
FEB	607
MAR	691

The following numbers are the average fish per angler and average hours per fish. For example: in the month of January each angler caught 2.3 fish and it took that angler and average of 2.2 hours to catch that fish.

Avg. Fish per angler	
JAN	2.3
FEB	3
MAR	3.6

Avg. Hours per fish	
JAN	2.2
FEB	1.9
MAR	1.7

Below is a percentage graph of the sizes of all fish caught for the months of January, February, and March. The largest percentage of fish was in the 17-20 inch range with 53% in this size range. The over 24 inch fish had the smallest percentage with 3%.



*These numbers are averages so your fishing efforts may vary.

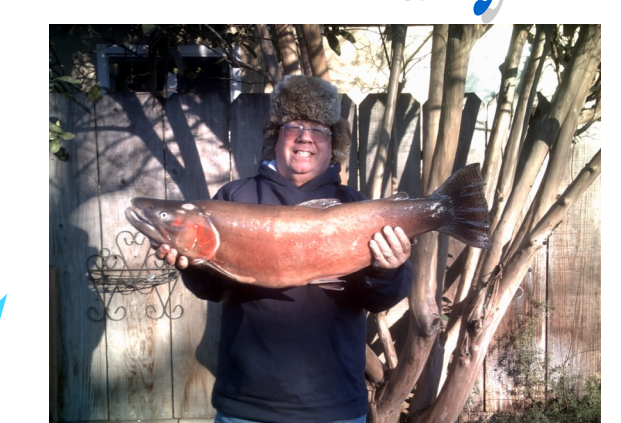
Catch of the day!



On 3/9/11 Michael McNeilly caught this 11 pounds 12 ounces LCT.



On 1/15/11 this 15 lb. 8 oz LCT was brought in and we forgot to get the anglers name, sorry.



On 2/5/11 Robin Wood of Modesto, CA caught this 17 pound 4 ounce LCT at the Nets.



If you have a picture of your catch and you want to share it in our newsletter, please email a picture and all information to smandell@plpt.nsn.us.